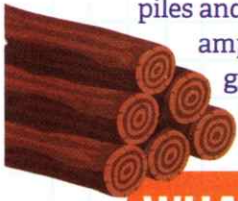


HOW TO HELP WILDLIFE

Your step-by-step guide to making a log shelter

Spring has sprung which means it's time to dig out your gardening gloves and transform your garden for wildlife. Log shelters are simple to make, adaptable and benefit wildlife all year round. This makes them the perfect first step to a garden bursting with wildlife. Insects, moss and fungi all make themselves at home on log piles and they can even become the perfect cosy hibernaculum for hedgehogs and amphibians over the winter months. Being irresistible to insects, log piles are great foraging sites for birds and small mammals too! Big or small, building a log pile has infinite benefits. Follow our easy guide below to get started.



Common Toad: Tom Marshall



WHAT YOU WILL NEED

- Logs • Gloves • Leaves • Rake • Spade (optional)
- Recycled garden materials (optional) • Soil (optional)



Start

Gather your materials. You can contact your local nature reserve warden to get some logs. Avoid taking logs from the woods as they may already be a thriving habitat. Don't forget to utilise what you already have in your garden!



Step 1

Decide upon a lightly shaded area for your log pile to sit. If possible, rake slightly into the ground, this will not only support the structure but also hold the temperature during colder months.



Step 2

Begin constructing your log pile structure by laying the logs horizontally beside one another and building upwards.

Step 3

Pack your log pile with leaves, as this will make it more attractive for hibernating animals such as hedgehogs. You can also add soil to encourage the growth of plants.



Finish

If you have any recycled garden materials, be sure to incorporate these into your log pile. A plant pot packed with leaves will make a great abode for a toad.

If you make your own **log shelter**, we'd love to see it. Send your pictures to magazine@essexwt.org.uk.